

Maintenance

AVIK20W and AVIK40W **AVIKW**

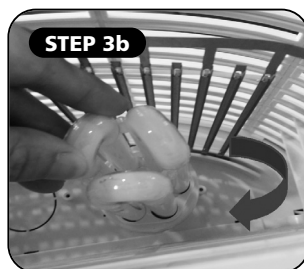
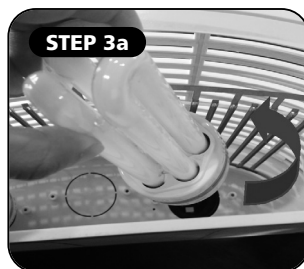
Cleaning

- Always disconnect the power before any maintenance.
- Slide out the collection tray to remove and throw away the bodies of insects.
- The body of the unit should only need occasional wiping over with a damp cloth and mild detergent..

Changing the lamps

- **Step 1:** Disconnect the power
- **Step 2:** Remove the collection tray to gain access
- **Step 3a:** Rotate the lamp anticlockwise, to remove them.
- **Step 3b:** Install the new lamp by rotating the lamp clockwise.
- **Step 4:** After replacing lamp, replace the collection tray.

NOTE: if the Insect Killer is free-standing, remove the collection tray and turn the unit upside down to gain access to the lamps.



Specifications

AVIK20W and AVIK40W

Electrical Ratings

Model AVIK20W: Ratings: 220-240V ~ 50/60Hz;
1 x 20W E-27 3U UV Energy Saving Lamp;

Model AVIK40W: Ratings: 220-240V ~ 50Hz; 2500V max;
2 x 20W E-27 3U UV Energy Saving Lamp;



Waste electrical products should not be disposed of with household waste. Please recycle where facilities exist. Check with your local authority or retailer for recycling advice

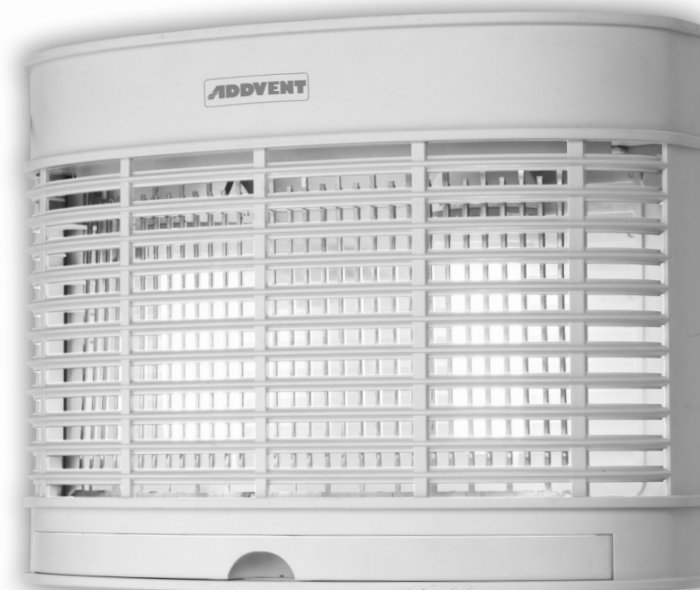
ADDVENT

Telephone: 0117 923 5375 Fax: 0117 923 5374
Victoria Road, Avonmouth, Bristol BS11 9DB www.addvent.co.uk

ISSUE 1/0316

AVIK20W and AVIK40W Low Energy Insect Killers

Installation Instructions and User Guide



IMPORTANT SAFEGUARDS

WHEN USING ANY ELECTRICAL APPLIANCE, BASIC SAFETY PRECAUTIONS SHOULD ALWAYS BE FOLLOWED.

PLEASE READ ALL INSTRUCTIONS CAREFULLY
AND RETAIN FOR FUTURE REFERENCE

ADDVENT

Safety Instructions **WARNING**

WARNINGS

- Check the local voltage before working. As there is a danger of electric shock DO NOT touch the internal high voltage grids. NEVER put metal objects inside the mesh.
- The appliance is for INDOOR USE only, but is NOT SUITABLE for use in barns, stables or similar locations. The appliance is not to be used where there may be flammable vapours or explosive dust.
- Install the appliance out of the reach of children.
- To avoid electric shock, NEVER remove any fixed part of the appliance.
DO NOT touch the high-voltage grid with any object when powered.
- If the supply cord, lamp, or any other part of appliance is damaged, return the appliance to place of purchase for advice. Repairs should be carried out by the manufacturer or qualified electricians.

Installation

AVIK20W and AVIK40W **AVIKW**

Before installation

These units are suitable for wall-mounting or may free-stand on a secure surface.

- **Siting the unit:** The unit should be sited at 90° to the major light source. Ideally, the unit should be mounted as close to 2m from the floor as possible. Avoid mounting in the airstream to prevent dead insect being blown away. DO NOT mount above a food preparation area as the intention is to attract the flying insect away from such areas. To avoid exposure to UV light, the unit should be sited 1m away from any operator workstation.
- Make certain that you have all the parts and appropriate tools for installation.
- Ensure that the power is disconnected before installation.

Installation

Electrical

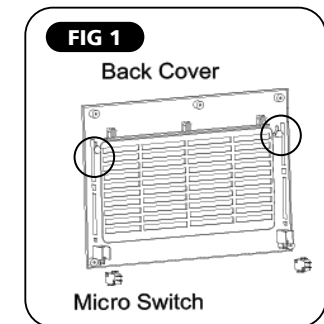
- The electrical supply required for this unit is (single phase) 220V-240V AC, 50/60Hz.

NOTE: a circuit breaker (RCCB) may be required in certain installations.

Installation

- **Fixing:** The unit is supplied with suitable fixings for mounting to a wall.
- Drill and fix two screws to the wall.
- Then using the fixing slots in the back cover – as shown in *figure 1* – slide the unit over the wall fixing screws until it is located firmly.

Once installed, there should be easy access to the power cord and plug to allow cleaning and maintenance. The unit must be fixed in position before connecting the electricity.



Operation

- The unit is switched on and off using the switch located top right hand side.
- For the operators safety, a micro switch will cut-off the power to the unit when the collection tray is removed.