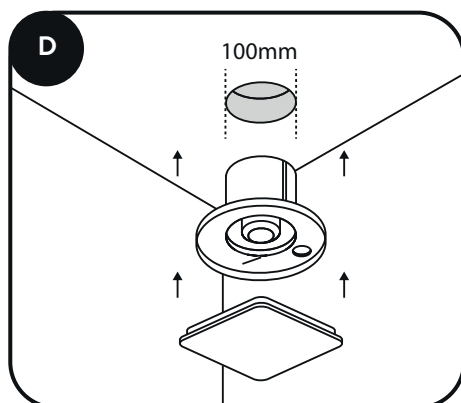
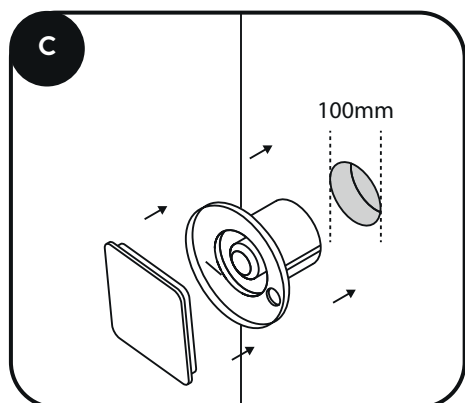
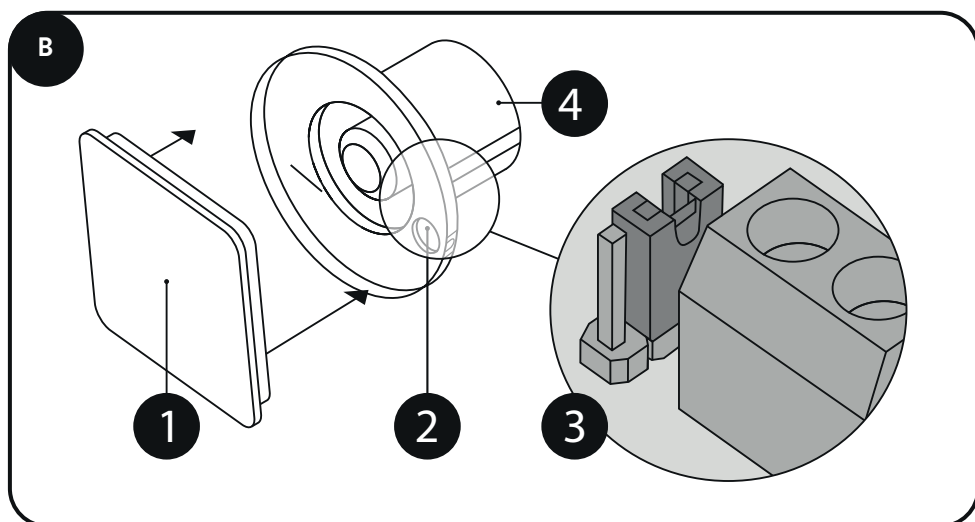
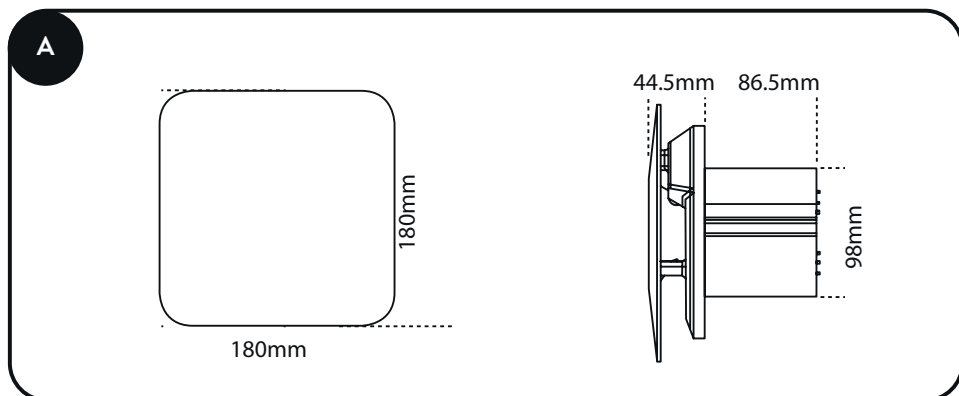


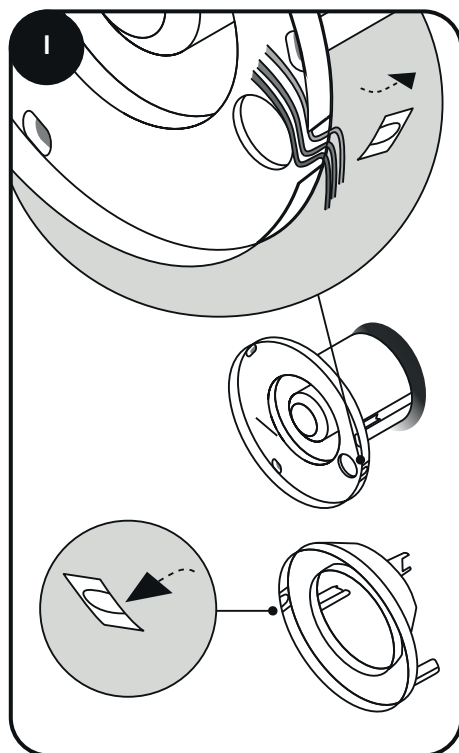
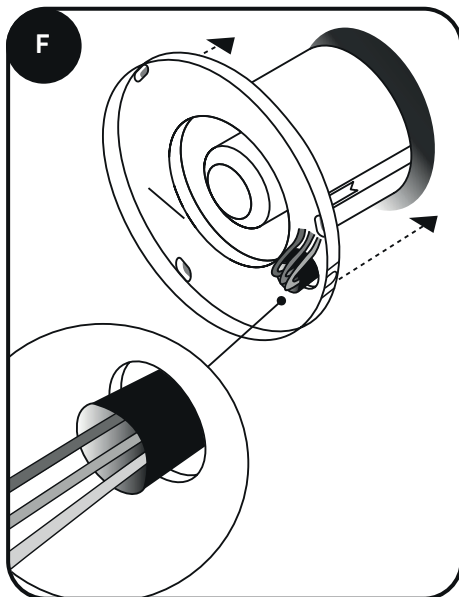
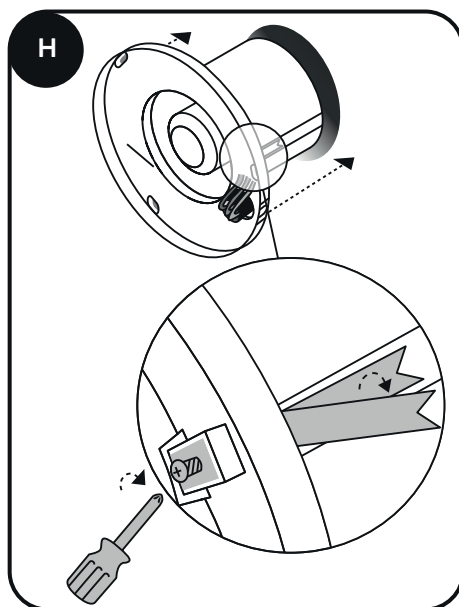
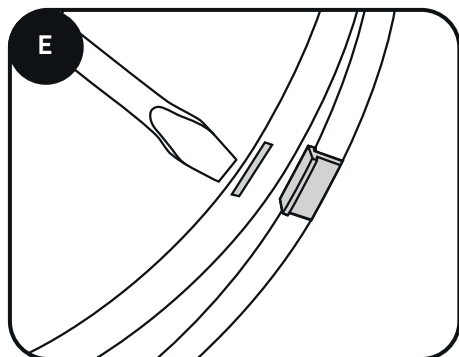
**Addvent Whisper Silent
100mm Contour Fan
AVX100WT
AVX100WH**

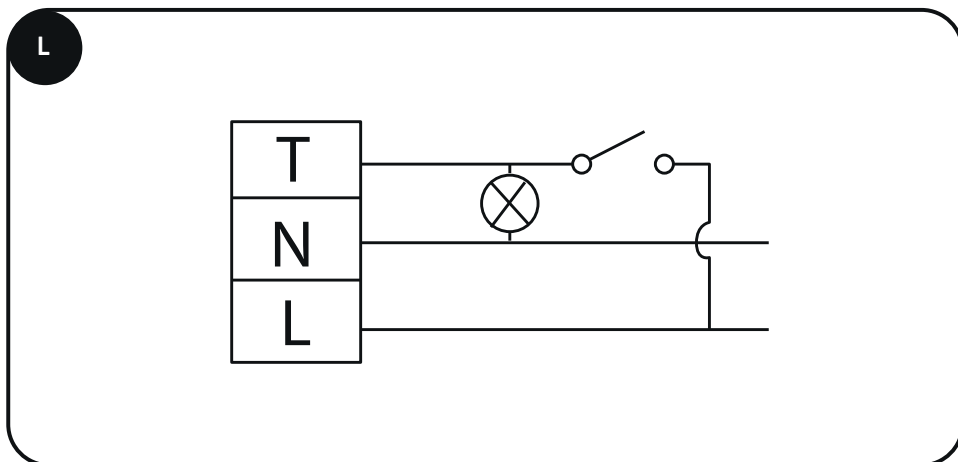
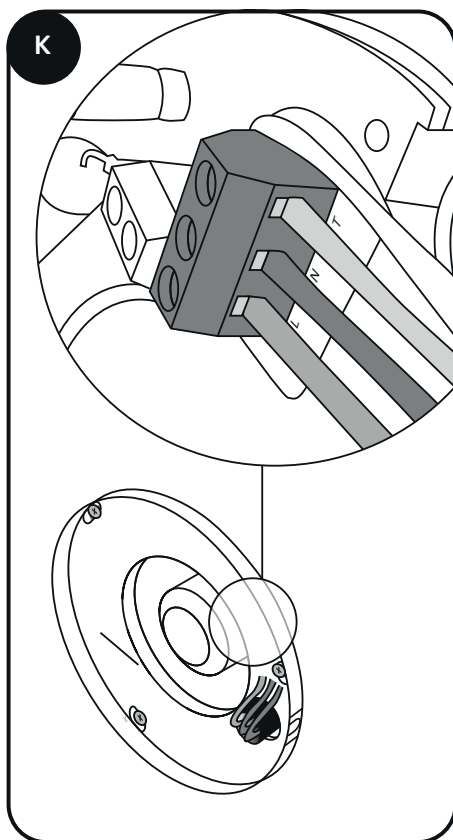
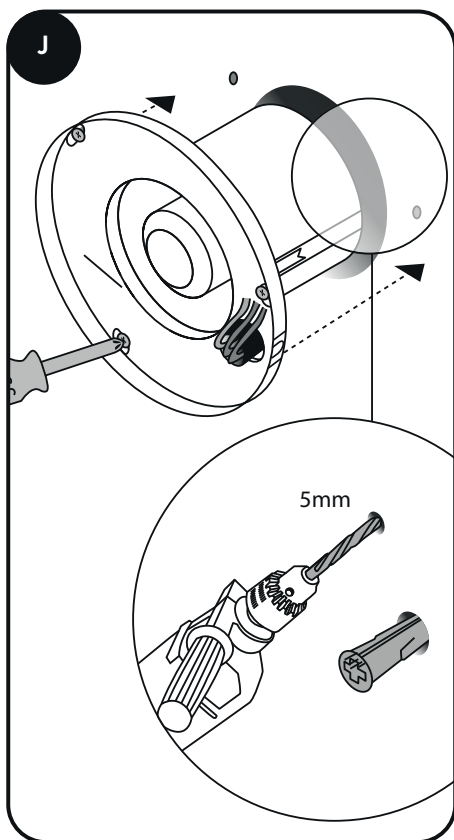


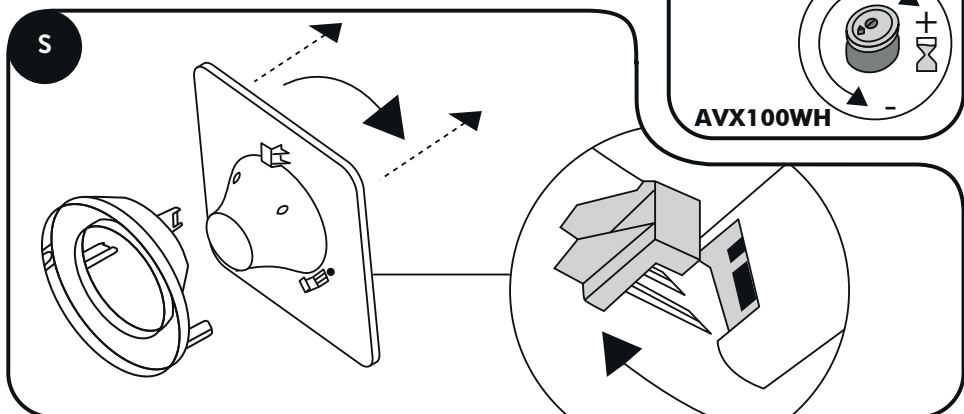
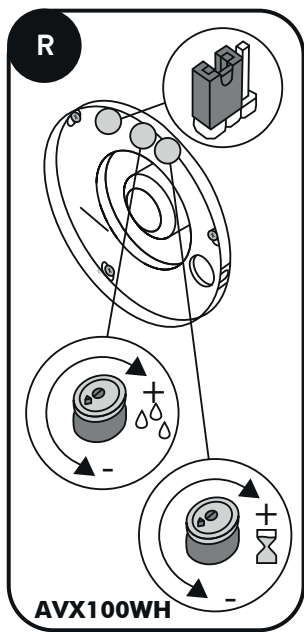
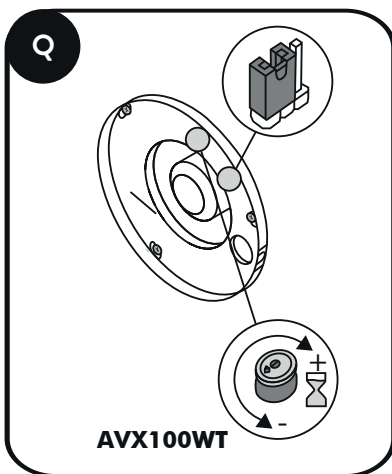
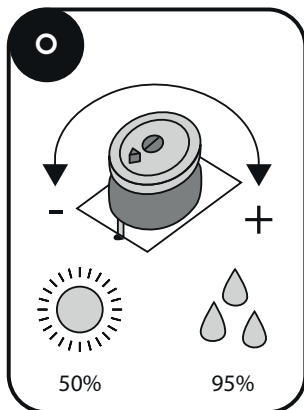
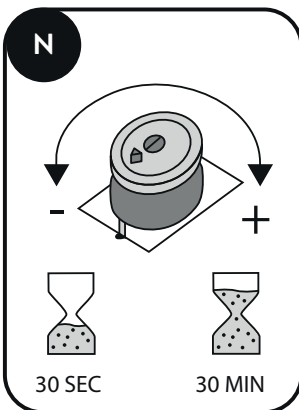
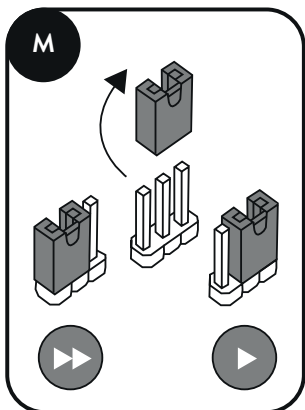
**INSTALLATION AND
MAINTENANCE**

ADDVENT









This appliance can be used by children aged from 8 years and above and persons with reduced physical, sensory capabilities or lack of experience and knowledge if they have been given supervision or instruction concerning the use of the appliance in a safe way and understand the hazards involved. Children shall not play with the appliance. Cleaning and maintenance of the appliance shall not be made by children.

Before you start



Check that the electrical rating shown on each fan matches the mains supply. All installations must be supervised by a qualified electrician. Installations and wiring must conform to current local regulations.

Do read the entire instruction leaflet before commencing installation.

Do make sure the mains supply is switched off before attempting to make electrical connections or carry out any maintenance or cleaning.

The appliance is double insulated and does not require an earth connection.

General information



Always check the appropriate size of space before installing the fan.

Included in the box:

- 3x screws and 3x wall plugs.

Tools for installation:

- 3mm electrician's screwdriver and No.1 or 2 Pozidriv screwdriver.
- Electric drill with 5mm drill bit may be required.

General information

AVX100WT

Built-in timer operates fan for a preset delay from 30 seconds to 30 minutes. Operate the fan using an on/off switch (not supplied).

AVX100WH

Operates when triggered automatically by the integral humidity sensor, or by using an external on/off switch (not supplied).

In automatic mode: The built-in timer automatically operates the fan for a pre-set delay time from 30 seconds to 30 minutes once humidity drops below the pre-set relative humidity (RH) value.

External operation: When switched off using the external on/off switch the fan continues to run for the preset delay from 30 seconds to 30 minutes.

*Factory settings: Timer 15 minutes, RH 75%.

Where to locate the fan



Locate it as high as possible. At least 110mm from the edges of the mounting surface to the centre of the hole. As far away as possible from and opposite to the main source of air replacement to ensure airflow across the room (e.g. opposite the internal doorway). Near the source of steam or odours.



Not where ambient temperatures are likely to exceed 50°C. If installed in a kitchen, fans must not be mounted immediately above a cooker hob, or eye level grill. If installing in a room containing a fuel burning device which has a non-balanced flue, it is the installer's responsibility to ensure that there is enough replacement air to prevent fumes being drawn down the flue when the fan is operating up to maximum extract. Refer to Building Regulations for specific requirements. Exhaust air must not be discharged into a flue used for exhausting of fumes from appliances supplied with energy other than electric. Requirements of all authorities concerned must be observed for exhaust air discharge and intake flow rates. Not suitable for use in possible chemical corrosive atmospheres

What you will need



Wall Mounting

- A ø100mm prepared hole.
- An external Wall Grille and ø100mm wall sleeve duct.



Ceiling Mounting

- A ø100mm prepared hole.
- Appropriate items depending on ceiling type.

- 3m flexible ducting
If the duct passes through a cold space use insulated duct

- Condensation Trap. Fitted immediately above the fan, this prevents water ingress due to condensation forming in the duct above the fan and running down.

Surface Mounting

- Miniature PVC trunking 16mm wide x 8mm deep.

UK only (all variants)

All models are connected to a double pole isolating switch on the main circuit. For fixed wiring circuits, the protective fuse for the appliance must not exceed 5A.

Installing switches and cables



Warning: Do not make any connections to the electrical supply at this stage.



Wet Rooms: on/off switch must be situated so that it cannot be touched by persons making use of the bath or shower.



The installation must be performed in accordance with local wiring regulations.

- If metal switch boxes are used, earthing regulations must be followed.
- The cross-sectional area of the supply cord used should be ranged between 1-1.5mm².
- AVX100WT - 3 core.
- AVX100WT - A wall or ceiling on/off switch (with indicator light) is recommended.

Step 1

Check that the electrical rating shown inside the back-plate matches your mains supply.

Step 2

Check there are no buried pipes or cables e.g. electricity, gas, water behind the switch location (in the wall or above the ceiling). If in doubt, seek professional advice.

Step 3

Isolate the mains supply.

Step 4

Install the isolating switch and on/off switch (if required).

Step 5

Lay in the cable from the isolating switch to the fan location via the on/off switch (if required). This must be housed in miniature PVC trunking.

Step 6

Lay in the cable from the isolating switch to the point of connection to the mains supply.

Step 7

Make all connections within the isolating switch and the on/off switch (if required).

Installation



Step 1 – Preparing the fan for installation

- Remove the front cover / baffle assembly.



If working above ground floor level, safety precautions must be observed.



Step 2 – Mount the back-plate

- Ensure back plate is level using level reference line **see G**.
- The fan may be fixed to a wall tube by tightening the quick fit clamp brackets, or with screws supplied if necessary **see H**.
- If surface mounting, cut out the thin wall section for the wiring **see I**.



Step 3 – Wire the electrical connections

- Please ensure you follow the right diagram and installation type for the model you have purchased **see L**.



Fan settings



All fans – speed setting

Select either high or low speed by connecting the jumper between the centre and high or low speed pin. Location of jumper is dependent on model purchased, **see P - R**.



AVX100WT

To adjust the over-run period **see N**.
For location of timer control **see Q**.



AVX100WH

To adjust humidity operation between 50% and 95% **see O**. To adjust the over-run period **see N**. For location of humidistat and timer control **see R**.

Finally refit the front cover/baffle. If surface mounting, remove cut out before refitting **see I. Miniature PVC trunking must be sealed against the front cover.**

Cleaning

Step 1 – Before cleaning

Isolate the fan completely from the mains supply and remove front baffle **see S.**

Step 2 – No water or chemicals

Do not immerse the fan in water or other liquids to clean any other parts of the fan. Do not use strong detergents, solvents or chemical cleaners.

Step 3 – Clean front

Wipe it with a damp, lint free cloth or wash it with warm soapy water. Thoroughly dry the front baffle and refit.



Waste electrical products should not be disposed of with household waste. Please recycle where facilities exist. Check with your local authority or retailer for recycling advice.



Telephone: **0117 923 5375** Fax: **0117 923 5374**
Unit 12, Access 18, Bristol BS11 8HT
www.addvent.co.uk